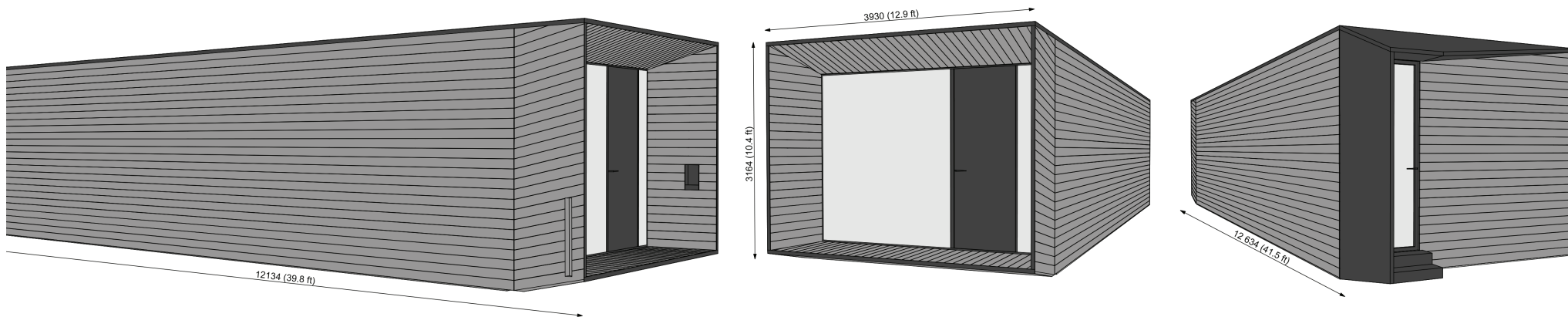


Area of building perimeter: 43.6 m²
Usable floor area: 35.9 m²
Weight: ca 12 t
Roof snow load: 400kg/m²

External:
L = 12134 mm + 500 mm roof over back door
W = 3930 mm
H = 3164 mm

Internal:
L = 10829 mm
W = 3416 mm
H = 2500 mm
V = 92,5 m³

KODA Compact Extended



KODA Compact Extended / exterior 3D scheme / KODA by Kodasema

23.11.2019

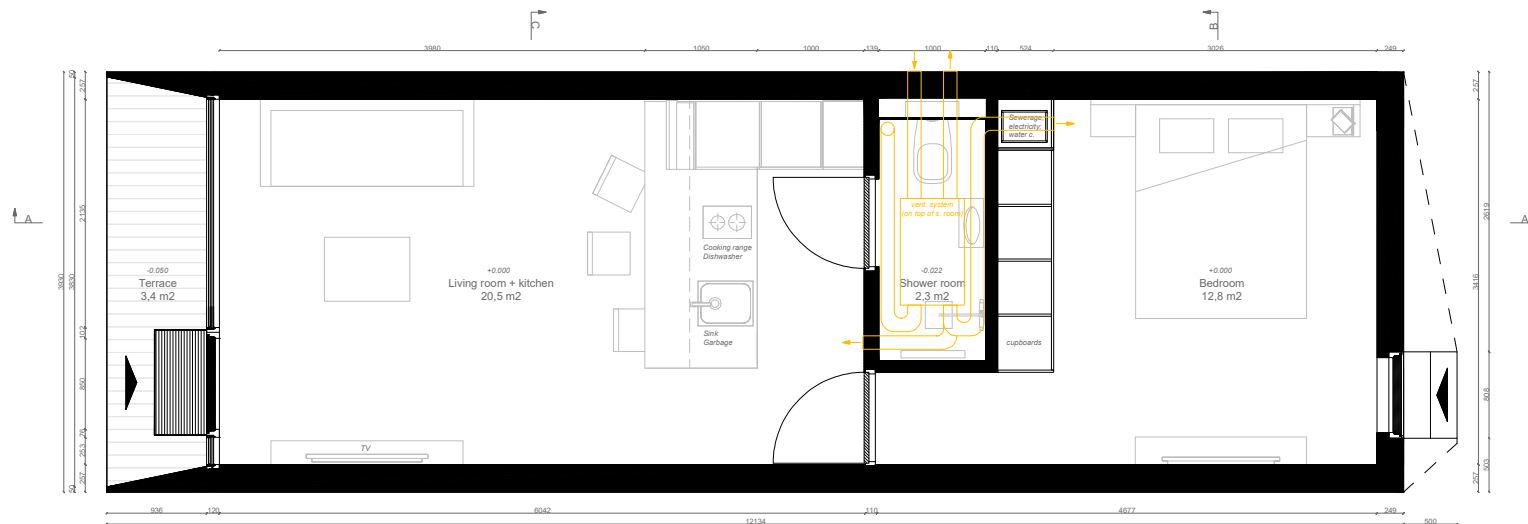


KODA Light Extended vs KODA Compact Extended / KODA by Kodasema



KODA Compact Extended / interior 3D scheme / KODA by Kodasema

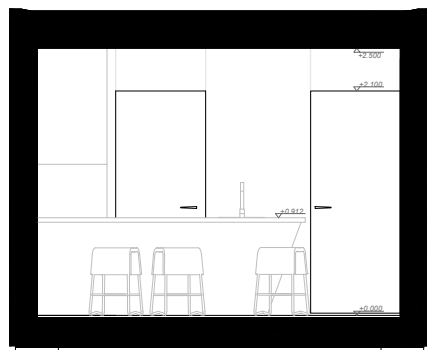
23.11.2019



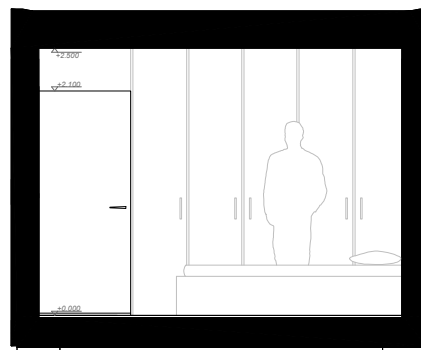
Floor plan



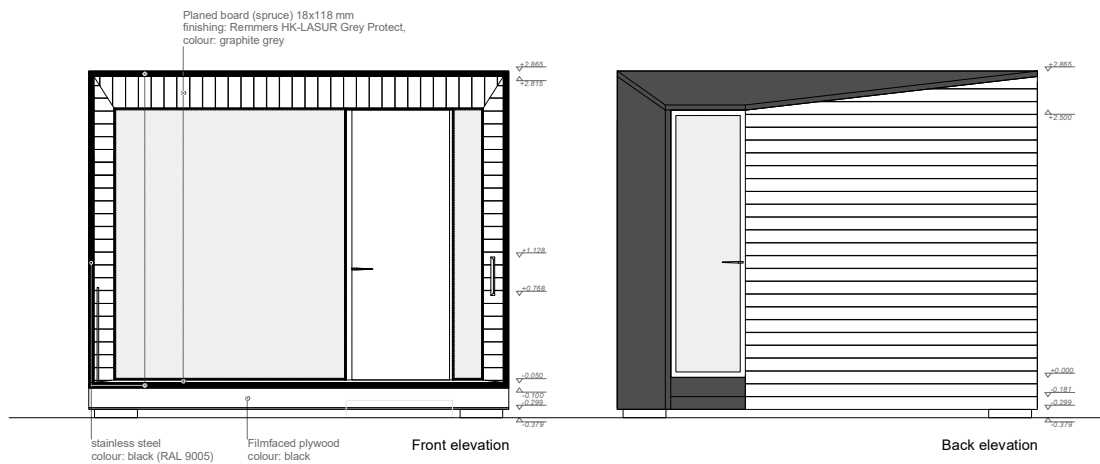
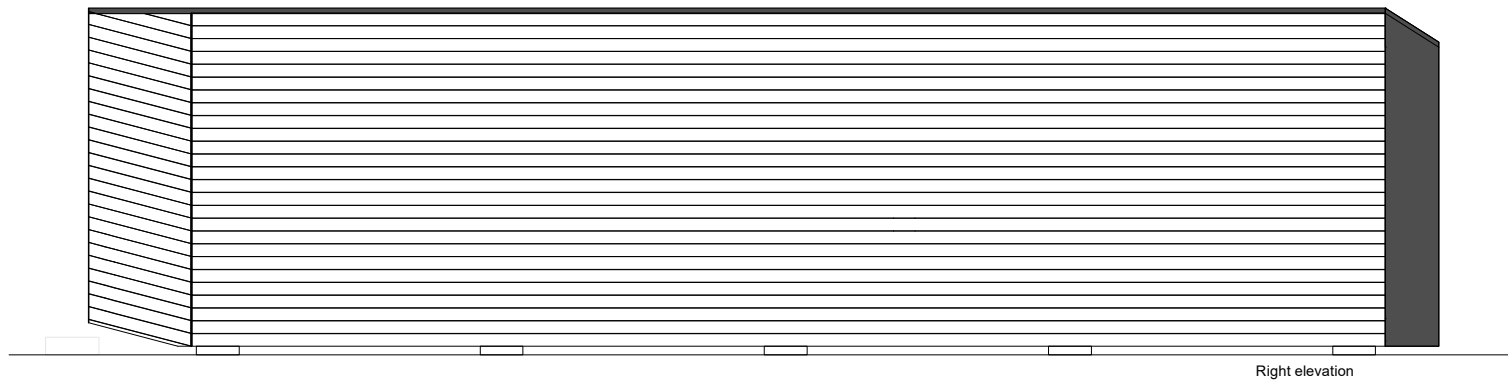
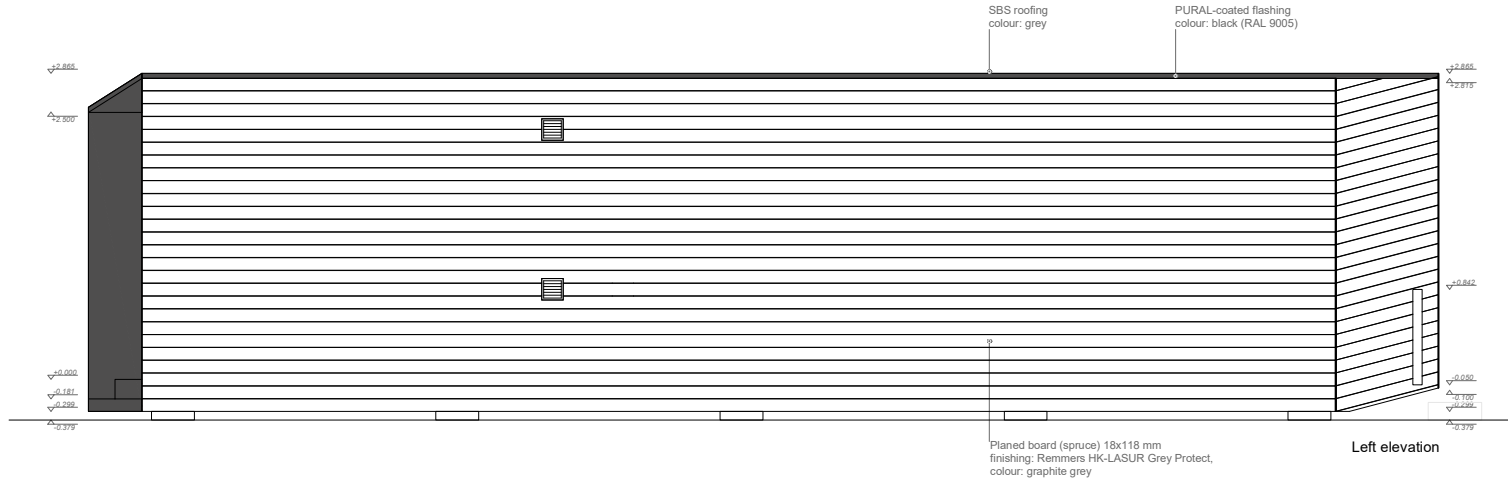
Section AA



Section BB



Section CC



KODA Compact Extended / elevations /
KODA by Kodasema

23.11.2019

STRUCTURE

KODA walls, floor, ceiling, terrace
Interior finish: plywood walls, laminate floor
Glass facade, 3 layered
Glass door in back wall
Front door
Sunshade
Technical room

MEP (Mechanical, Electrical, Plumbing)
Electrical connection 20A 3F
Electric floor heating
LED lighting, readiness for pendant lights
Sewerage connection 110mm
Water connection DN15
Ventilation (PAX EOS 100H)
Water boiler

FURNISHING

Kitchen cabinets including
· Built-in fridge
· Induction hob
Bathroom with sanitary equipment
Mirror in bathroom

EXTERIOR EQUIPMENT

Mailbox (open)
Roof over back door
Bicycle holder

EXTERIOR FINISH

Timber cladding by default
Steel cladding, at extra cost
Composite panel, at extra cost

EXTRAS

Natural parquet floor
Kitchen hood
Oven
Dishwasher
Premium mixers in bathroom and kitchen

CONTACT US FOR FURTHER INFORMATION

KODA by Kodasema
sales@kodasema.com
www.kodasema.com
#kodabykodasema

KODA Compact Extended

23.11.2019