



The visual is showing a cross-section,  
not a window on the side wall.

# KODA

BY KODASEMA

MOVABLE HOUSING SOLUTIONS

## KODA Compact EU MODEL

KODA Compact provides comfort  
with a smaller ecological footprint.

When you feel ready to move, you can bring your KODA  
with you! This small house gives you reduced costs in  
transportation and most of all, true flexibility.

Use it for private housing or urban infill development  
projects for commercialization.

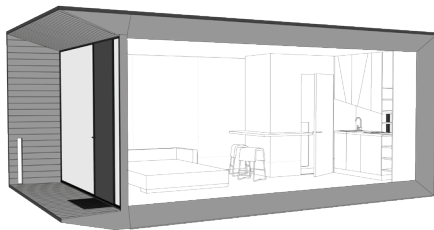
The stackability allows to create two-storey apartment  
buildings, making even better use of the space avail-  
able in tight urban locations.



# KODA COMPACT IN NUMBERS

Gross buildable area	28.8m <sup>2</sup>
<b>Usable floor area</b>	<b>20.5 m<sup>2</sup></b>
Weight ca	9 tonnes
Roof snow load	400kg/m <sup>2</sup>
External	L 7226, W 3930, H 3164 (L with ladder + 200) mm
Internal	L 5852, W 3416, H 2700mm
Terrace	L 931, W3416 mm

**ARCHITECTS:** Maria Alnek, Ülar Mark  
**INTERIOR ARCHITECT:** Angela Orgusaar, Maria Alnek



## STRUCTURE

KODA walls, floor, ceiling, terrace  
Interior finish: plywood walls, laminate floor  
Glass facade, 3 layered  
Openable kitchen window  
Front door  
Sunshade  
Technical room

## MEP (Mechanical, Electrical, Plumbing)

Electrical cables in panels  
Electrical connection 20A 3Ph  
Electric floor heating  
LED lighting, readiness for pendant lights  
Sewerage connection 110mm  
Water connection DN15  
Ventilation system  
Water boiler

## FURNISHING - inclusive

Kitchen cabinets on back wall  
Built-in fridge Induction hob  
Curtain rail  
Mirror in living area  
Bathroom with sanitary equipment

## PREMIUM EQUIPMENT – to be confirmed at extra cost

Natural parquet floor  
Kitchen hood  
Kitchen cabinets on side wall  
Integrated dining table  
Dishwasher or washing machine  
Premium mixers in bathroom and kitchen  
Cooling system

## EXTERIOR EQUIPMENT

Mailbox (open)  
Ladder installed on back wall  
Bicycle holde

## EXTERIOR FINISH

Default Timber cladding, in various tones  
Extra Steel cladding, in various tones  
Extra Composite panel, in various tones





# TELL US WHAT YOU NEED:

[sales@kodasema.com](mailto:sales@kodasema.com)



## A freestanding KODA for private use:

top quality architecture | movable | sustainable |  
stackable | zen | offsite prefab |

## A movable KODA Park for real-estate development:

hotel | office | café | studio | classroom | retail |  
co-working

## KODA for society or public services:

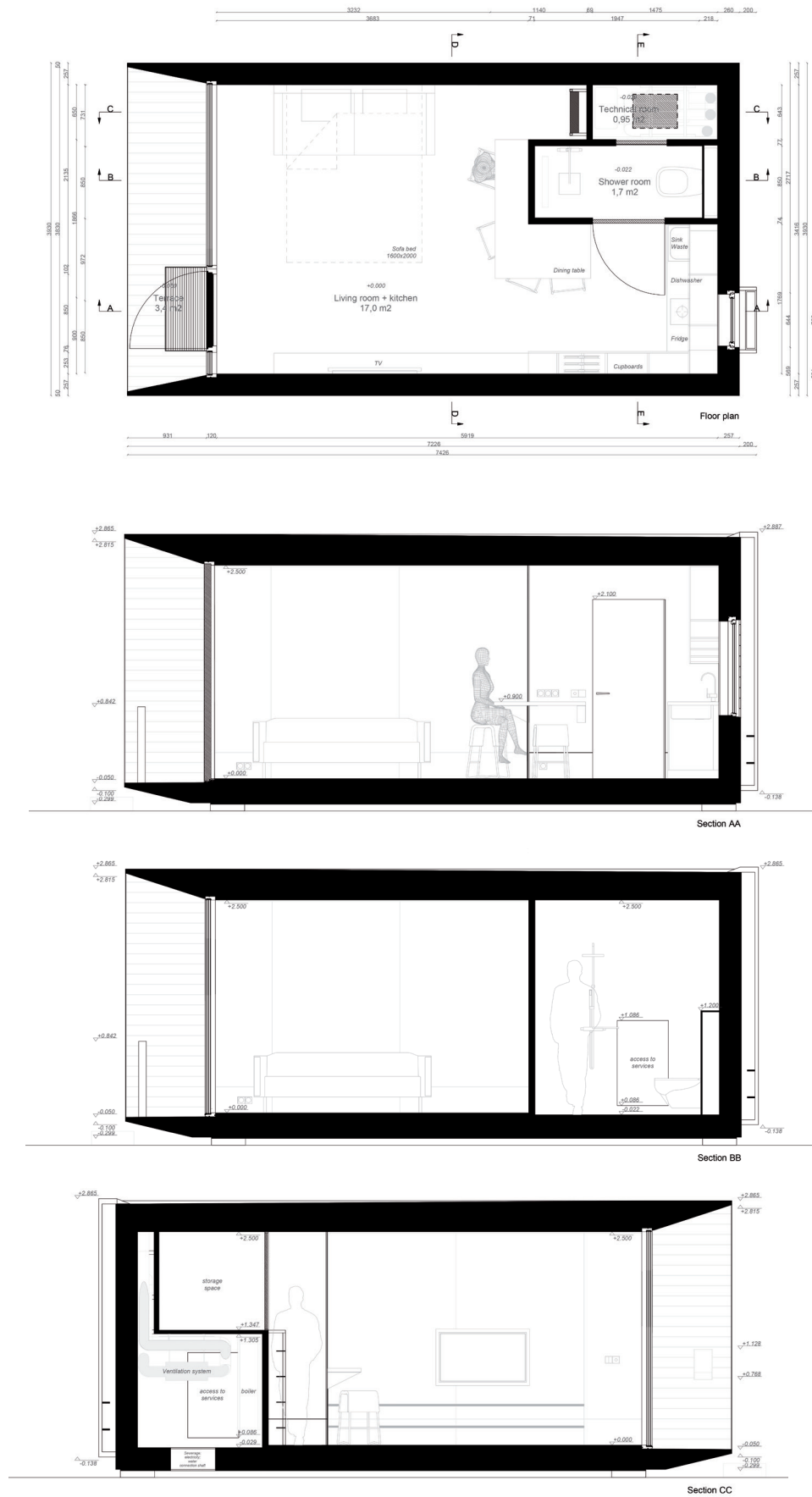
infill | built-to-rent | dynamic cities and planning |  
quick, easy & flexible.



Find the most recent info on all KODA models and  
KODA Park solutions on our website and sign up for  
our newsletter for monthly updates!

[kodasema.com](http://kodasema.com)

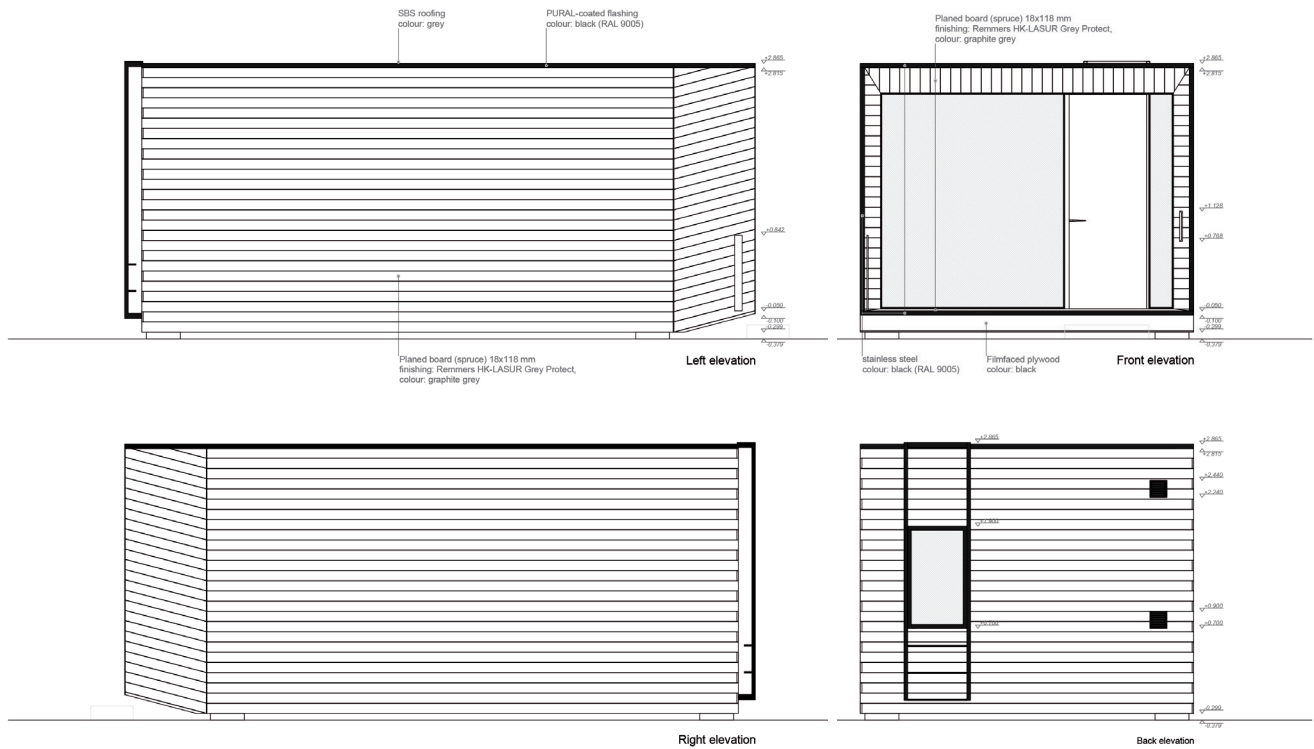




Indoor views



Indoor views



Sideviews

**KODA**  
BY KODASEMA  
MOVABLE HOUSING SOLUTIONS



WORLD Architecture Festival 2016:  
SMALL PROJECT PRIZE FINALIST 2017:  
SCHOOLS FINALIST



WAN Urban Challenge 2017:  
London Housing  
COMPETITION WINNER



American Architecture Prize 2016:  
SILVER MEDAL FOR INTERIOR 2017  
HOSPITALITY ARCHITECTURE &  
URBAN DESIGN WINNER



DNA Paris Design Awards Winner 2019  
KODA Park INTERIOR DESIGN / Sustainable living  
ARCHITECTURE / Green Architecture



OPAL winner 2019  
Property development

#kodabykodasema #modular #prefab #movable #turnkey #sustainableliving #compactliving #proptech